

“WHERE THERE
IS BELIEF THERE
IS POSSIBILITY”

“I BELIEVE I CAN PERFORM IN
A WEST END MUSICAL”

TEDDY

Luckley
HOUSE SCHOOL

Our Core Values

Luckley House School is built on the Christian foundations of love and service. We enable our pupils to thrive in a secure and encouraging environment, thereby equipping each individual to be resourceful and resilient – ready to take on life's many challenges and opportunities.

Welcome



Dear Parents and Guardians,

Within this booklet is information regarding our admissions process, fees, academic curriculum, co-curricular activities, transport and boarding options. I hope you will find it useful and informative, but please do also look at our website; www.luckleyhouseschool.org to find out more.

At Luckley we aim to embed 21st century learning in all aspects of school life, recognising that learning is not only about academics, but about learning for life. We are nevertheless proud of the academic achievements of each pupil. The results reflect the hard work of pupils, exceptional teaching and the support of their parents and families.

At Luckley, pupils enjoy a learning experience which utilises close academic tracking and which recognises individual strengths to maximise wider learning and academic achievement. We focus on the 'personal best' of each pupil, on making progress and on resulting added value. Our curriculum both stretches and nurtures, so that all pupils reach their potential, both in and out of the classroom. Our added value is a feature of the education provided at Luckley, which is independently verified utilising the baseline tests taken on entry to the school. This enables our pupils to begin their A Level studies at Luckley in the best possible position to achieve those outstanding grades that will secure them a place at the university of their choice, or in highly regarded employment or apprenticeship opportunities.

We are also proud of our enrichment programme which is rich and diverse. Pupils are encouraged to enhance their experiences by selecting activities that they will enjoy. There is a range of musical, arts and crafts, drama and sports activities, as well as some more specialised activities such as the Duke of Edinburgh's Award Programme and Combined Cadet Force. Playing a full part in school life is encouraged, helping pupils develop into well-rounded individuals who are equipped for their future in an ever-changing and diverse society. Most importantly, Luckley is a school that is confident that where there is belief, there is possibility! We recognise each pupil for who they are and value and encourage each of them as individuals to be happy, compassionate, courageous to have self-belief and to aim high!

We are very happy to answer any questions you have in person, by email, or by telephone, so please do not hesitate to contact us. We look forward to welcoming you and your child to visit us, either for an individual appointment, or at one of our open events scheduled throughout the year.

Mrs Areti Bizior
Headmistress

Admissions

We aim to make admissions as simple and stress-free as possible for all prospective pupils and their parents, with our Registrar keeping families well-informed at each step of the process. Ultimately, we are here to help you decide if Luckley is the right school for your child.

Year 7 And Year 9 Entry

We admit pupils at age 11 and 13 through an entrance examination process, where both academic ability and all-round potential are assessed. Our entrance examinations will test pupils in Mathematics, English and Verbal, Non-Verbal, Quantitative and Spatial Reasoning. We consider a report from the current Headteacher and all candidates will have an interview with the Headmistress. As part of the interview process for Year 7 entry, we invite pupils to complete a personal 'story board' to demonstrate their hobbies, achievements and interests. All prospective pupils sitting the examination must be registered by mid November of the preceding year - online registration is available via the website. A non-refundable registration fee of £150 must be submitted with the registration (£250 for overseas pupils).

Admission Into Other Year Groups

Pupils who wish to join us at other entry points will be assessed through an entrance examination, interview and school report. In instances where the pupil is overseas and unable to sit the examination at Luckley House School, papers can be sent to their current school to be sat under examination conditions. Admission is dependent on vacancies in the relevant year group.

Sixth Form Entry

For entry into Sixth Form, the pupil's predicted examination results, school report and interview are considered in the selection process.

Examination Dates

Entrance exams take place on a number of dates in October and November. Please contact the Registrar for details.



Admissions

Visiting

There are many opportunities for prospective families to visit Luckley House School.

Open Events

Autumn term Open Morning - Saturday 12 October 2024

Spring term Open Morning - Wednesday 19 March 2025

Summer term Open Evening - Wednesday 11 June 2025

Individual Appointments

Individual appointments to meet the Headmistress are available every week and can be arranged by contacting the Registrar on 0118 974 3221 Email: Registrar@luckleyhouseschool.org.

Taster Days

We welcome pupils from schools across a wide area to our taster days. Details of these are available on our website.

Accepting A Place

Offers will be made to pupils by the end of January of the year of entry. Parents are asked to confirm acceptance of the place by early March. The acceptance form should be returned along with a deposit of £1500 plus VAT. All deposits are set against the final term's disbursements.

Uniform

We work with Stevensons and Playerlayer to produce all uniform. It can be ordered online at www.stevensons.co.uk, or you can visit the Stevensons store at their Reading branch in Chatham Street. Email: readingbranch@stevenson.co.uk



Financial Information

2024 – 2025 Fees per term

Day School Fees - £6,700 plus VAT (£8,040 incl VAT)

Weekly Boarding School Fees - £9,450 plus VAT (£11,340 incl VAT)

Full Boarding School Fees - £11,975 plus VAT (£14,370 incl VAT)

Flexi-boarding (per night, with 48 hours notice) £60 plus VAT (£72 incl VAT)

In addition, the following not optional specified charges will be added to all the above fees.

Lunches during the school day- £350 (No VAT)

Books and stationery - £15 (No VAT)

Non-educational after-school clubs - £35 (No VAT)

EXEAT Weekends: There is one optional EXEAT weekend per half term. Boarders may stay in school if they wish at a cost of £150 + VAT (£180 incl VAT). There will be activities running at an additional cost in line with the usual week-end boarding costs.

Additional tuition - see Page 7 for costs.

Speech and Language lessons and Music lessons on a wide range of instruments are available from peripatetic teachers who will submit their own bills, which should be paid directly to them.

Alumni Joining Fee - £80. Luckley's alumni community is a far-reaching community that spans decades, and is situated in all corners of the world; with opportunities to network, seek work experience and career opportunities as well as enjoy reunions and sporting events.

Transport - Visit www.luckleyhouseschool.vectare.co.uk for details of costs.

Scholarships

Year 7 and Year 9 entry - Academic Scholarships are awarded based on the results of the entrance examination and a subsequent presentation to the Headmistress and Head Students. Minor awards are made for exceptional performance in one area of the examination. Art, Music, Drama and Sport Scholarships based on performance and interview are also available.

Sixth Form - Additional Academic Scholarships are awarded at Sixth Form, plus awards for Music, Drama, Sport and Art. Applications are welcome from both internal and external candidates.

Bursaries And Discounts

Means-tested bursaries are available. We also offer a sibling discount of 10% and a 25% discount for full time Christian workers. A further 10% discount is offered to UK Armed Forces and HM Foreign Office parents providing proof of receipt of Continuity of Education Allowance if not receiving further concessions.

Registration for bursary applications should be made by the end of September prior to entry. Contact the Bursar's Department on 0118 974 3201 Email bursary_email@luckleyhouseschool.org

Payment Schemes

We offer an in-house monthly instalment scheme and a 'fees in advance' scheme. Details of both can be obtained from the Bursary Office.

Fee Protection Scheme

Parents are able to register with the Fee Protection Scheme. The costs are calculated as a percentage of the termly fee, excluding extras. Please contact the Bursary Department for details.

Fees And Notice

All tuition, boarding and transport fees are payable in full, on or before the first day of term. A full term's notice, in writing to the Headmistress, is required before withdrawing a pupil, or changing from boarding to day. Failing such notice, fees in lieu will be charged.

Terms & Conditions And Policies

A full copy of the School's terms and conditions and key policies are available on our website.

Flexibility

We offer flexible before and after school care provision to meet the demands of modern family life:

- Option 1: Early Start – Drop your child off at 07:45 for breakfast – £5 per day
- Option 2: Activities & Supper – Your child can stay for enrichment activities and join the boarders for supper until 18:30 – £7 per day
- Option 3: Twilight Care – Your child can stay for enrichment activities, then join the boarders for supper and supervised prep up until 20:00 – £22 per day.
- Breakfast and Twilight Care – £25 per day.

At least 24 hours notice is required for bookings.

The Enrichment Programme

In addition to supervised prep, a wide range of activities is available after school from Monday to Thursday, including sports clubs and fixtures, art and crafts, music, drama, fun cooking, gardening, Combined Cadets Force* and the Duke of Edinburgh's Award Scheme*. To ensure variety, the programme of activities is changed on a termly basis.

*Additional costs apply.



Catering

Healthy eating is on the menu at Luckley. Our catering team provides nutritious, varied and tasty meals for pupils and staff throughout the year. All pupils have school lunches which are included within the school fees. Vegetarian and vegan options are always available and special dietary requirements are easily catered for. Copies of the menus are available on our website.



Academic Curriculum

The curriculum at Luckley ensures continuity and progression in the important years leading to GCSE and A Level.

Years 7 - 9 (Key Stage 3)

Pupils follow a broad, balanced programme of study including: English, Mathematics, Science, Modern Languages (French, German, Spanish), Art, Design Technology, Drama, Food & Nutrition, Geography, History, ICT, Music, Photography, Physical Education, Religious Studies and Life Skills (our Personal, Social and Health Education programme).

Years 10 - 11 (GCSE)

In Year 9 pupils receive guidance in their choice of GCSE options. All pupils follow a common core of English Language, English Literature, Mathematics, Science (Double and Triple) and a Modern Foreign Language. Three further options are chosen from Art, Business, Computer Science, Design & Technology, Drama, Food Preparation & Nutrition, French, German, Latin, Spanish, Geography, History, Music, Photography, Physical Education and Religious Studies. The curriculum is planned to ensure maximum flexibility of choice. In addition, all pupils continue with Life Skills and PE.

Years 12 - 13 Sixth Form (A Level)

We offer over 20 subjects, providing a challenging and exciting variety of study options. Students study between two and four A Level subjects; choosing from Art, Biology, Business, Chemistry, Computer Science, Drama and Theatre Studies, Drama and Technical Design, Economics, English Literature, French, Geography, German, Graphics, History, Mathematics, Further Mathematics, Music, Music Technology, Photography, Physics, Politics, Psychology, Physical Education, Religious Studies, Spanish, Textiles and Three Dimensional Design. In addition, Sixth Formers take an Extended Project Qualification and follow an enrichment course which includes lectures, practical sessions, careers, ICT and PE.

Empowering Pupils with Technology

Part of our vision is that every pupil leaving Luckley must be proficient in widely-used information systems in such a way that their work and other activities are enhanced. All pupils are required to purchase their own Microsoft Surface tablet to use within lessons and at home for prep and further studies. New parents are provided with information on how to purchase an approved device with flexible payment options. This will remain the property of the child but will be configured by our IT staff to provide the pupil with access to the school network, antivirus protection and appropriate web filtering and monitoring.



Learning Support & Study Skills

The Learning Support Department aims to maximise opportunities and success for pupils who have learning differences via specialist support. In addition, we offer highly bespoke study skills courses for both GCSE and A Level pupils, designed to promote independent study, motivation and self-organisation. The department embraces the use of assistive technology and for those pupils who meet the examination boards' criteria, we can facilitate a range of access arrangements. Whole school literacy screening with the Lucid Exact online screening tool, together with in-house assessment carried out by specialist assessors, ensures that we have a full and detailed picture of any pupil's individual needs as they progress through Luckley House. Relevant charges for available support are provided below:

Personal Tuition (eg EAL) £60 per session.

Dyslexia Assessment £250 per assessment.

This is designed to establish if a full diagnostic assessment is required, or to determine if examination arrangements are appropriate for the individual. Typically, this screening assessment will include detailed interpretation of test results, possibly including:

- General ability
- Attainments, e.g. reading, spelling, writing
- Cognitive processing skills, e.g. memory, phonological awareness, speed of phonological processing.

Specialist Individual Support and Specialist Study Skills Support

For pupils with recognised learning differences. £52 per session.

The Six-Week Study Skills Course

The six-week study skills course is open to all pupils across the age range, but each session is carefully calibrated to enhance the academic performance of the individual, and thus offers a highly bespoke learning experience. The course begins with effective goal setting and then explores how to collate those resources and materials that are key to academic success, before moving on to explore time management, how to deal with adversity and examination preparation and technique. At every stage, we encourage learners to take ownership of their learning to develop resourcefulness, resilience, and a sense of self-efficacy which will serve them well, both within secondary school and in whatever path they choose beyond this.



Pastoral Care

Luckley enjoys a reputation for high standards of pastoral care. All pupils have daily contact with their Form Tutor, who takes a close interest in their academic and social welfare. Regular meetings with the Heads of Sections and Deputy Heads provide a forum for all staff to discuss the individual progress of each child.

Sixth Form students are also assigned to a Form Tutor who monitors their progress and gives them additional support necessary for the university application process and career choices. There is a specialist careers coordinator and library.

Communicating With Parents

Relationships with families are of utmost importance and this is reflected in Luckley's approach to communicating with parents. You will be welcomed into school to talk over any concerns which arise.

The School uses My School Portal and School Post for communicating with parents and this can be accessed via the School website and the PE Department uses an App for sports fixtures.

Life Skills

A comprehensive programme embracing citizenship and careers, along with personal, social and health education (PSHE) is part of the core curriculum for Years 7 to 11. This is taught as a discrete subject with additional support from Heads of Sections. Outside speakers regularly complement the work of the Luckley staff.

School Health Centre

We have a well-equipped Health Centre run by fully qualified nurses. Appointments are organised for boarders through the Health Centre for the doctor, dentist, orthodontist, opticians and vaccinations. Medical insurance schemes are available on request.

All medication for boarders must be given to the medical staff, including any vitamin tablets or supplements. Medication for day pupils should be handed in to the School Office, labelled with name and full instructions.



Co-Curricular Activities

Sport

Sport plays a big part in school life, with a brand new all-weather pitch added to the fantastic facilities last year and the acquisition of an additional five acres of land to be used for sports. Our enthusiastic Sports Department offers activities at both a recreational and competitive level and provides tailored support for pupils who compete in their sport at a high level outside of school. Our Athlete Development Programme (ADP) helps our pupils become the best versions of themselves that they can be in sport. It is aimed at our scholars and pupils who demonstrate sporting promise. The programme is tailored to the needs of each pupil and includes strength and conditioning, functional movement patterns, flexibility training, physical literacy, as well as sport-specific skills training.

Drama

Our amazing state of the art professional theatre is the heart and soul of school life. In addition to the drama and theatre studies curriculum, popular at both GCSE and A Level, there is a whole host of drama clubs and the LAMDA and Trinity programme, as well as regular music concerts, ensuring that the theatre is alive with performances throughout the year. Pupils also have the opportunity to specialise in the technical aspects of the theatre (sound and lighting), which is quite unique to Luckley. The Whitty Theatre is also a lively venue outside of school hours; it is home to many professional touring theatre companies, local dance and drama schools and the Wokingham Music Society, which puts on some fantastic concerts for the local community.

Music

Our young musicians have the use of a stunning purpose-built music centre, complete with five rehearsal/tuition rooms, a high-tech IT classroom, a recording studio and a performance hall. Pupils have the opportunity to study a wide range of musical styles, techniques and genres, ranging from the early classics to contemporary music, as well as modern music technologies and sound mixing. There are numerous opportunities for public performance, both in smaller recital or a more formal concert situation. The Music Department plays an important role in the life of the School, contributing to many occasions and events.

Art

Our Art Department is renowned for the inspirational pieces its pupils produce, many of whom have gone on to foundation courses and degree courses at university. In addition to three large art studios, our facilities include separate silkscreen and darkroom studios. The curriculum is diverse and rewarding, and we urge pupils to risk crossing boundaries between subjects, mediums and techniques. The result is the highly individual and varied body of art and photography you will see adorning the walls throughout the School.



Boarding at Luckley

We offer flexible boarding options to suit modern family life, including full boarding, weekly or ad hoc arrangements. Boarding at Luckley helps to develop valuable life skills, teaching our pupils to be tolerant and considerate team players. Additionally they learn responsibility for themselves, their study, their belongings and their relationships with others.

Our boarding staff, supported by current boarders, is skilled at ensuring that new boarders are absorbed into the boarding family with ease, and soon become settled and happy. The friendships created in our boarding environment are long standing. Pupils and staff are like a second family, where close and supportive relationships are the norm. Boarders are encouraged to keep in regular contact with their families, with wifi available, enabling them to email and video call.

Our pupils thrive within the routines set by the boarding houses. They have designated study periods to work either in their own rooms, or communal study areas. Full boarders are offered an exciting programme of weekend activities, including cultural trips and fun activities.

Structure Of The Day And Evening

07:30 - 07:40	Wake up	19:45 - 20:45	Boarding Group Time
07:45 - 08:15	Breakfast	21:00	Year 7 & 8 bedtime
08:40 - 16:00	School day	21:30	Year 9 bedtime
16:00 - 16:20	Tea & register	21:45	Year 10 bedtime
16:20 - 17:30	Enrichment	22:00	Year 11 bedtime
17:30 - 18:00	Free time	22:30	Sixth Form bedtime
18:00 - 18:30	Supper		
18:30	Prep time	Years 7-11 lights out 15 mins after bedtime.	
19:30	Years 7-9 finish prep		
19:45	Years 10-13 finish prep		



Leavers' Destinations

We are proud of the achievements of all our students. Most will go on to the university of their choice, with many securing places at Russell Group universities, or will take up prestigious placements at art and drama schools, including impressive degree apprenticeships.

Some of our recent leavers' destinations

University of Bath - Civil Engineering, Criminology, Sport Performance
University of Birmingham - Law, Psychology and International Business, with French
University of Bristol - Psychology with Criminology
University of Cardiff - Politics and International Relations
University of Edinburgh - Biological Sciences (Biotechnology)
University of Exeter - Computer Science, Economics, Exercise and Sports Science, Marketing and Management, Mathematics, Politics
Imperial College, London - Geophysics
University of Leeds - Biochemistry, Music
University of London (King's College) - Classics, War Studies and History
University of London (Royal Holloway) - Philosophy, Politics and Economics
University of Loughborough - Psychology
University of Manchester - Biology, Interior Design
University of Nottingham - Music and Philosophy
Queen Mary's University, London - Biomedical Sciences
University of Southampton - Economics, Environmental Sciences, Law, Modern Languages, Physics
St Andrew's University - Geology
University of Surrey - Veterinary Medicine and Science
University of Warwick - Biomedical Science
University of Winchester - Digital Media Design
University of York - English
Wheaton College, USA - Business



What Luckley Parents Say



"We looked at Luckley House because we knew of the Head Teacher's reputation, and because of the the School's Christian ethos and foundation. Every day, since choosing Luckley House, we have had cause to be thankful that we did so. The pastoral care is excellent, the School is neither too big, nor too small, and the teaching is of a high standard – our son is engaged and enthusiastic. The Whitty Theatre was a big deciding factor, as was the length of the school day, registration time, and flexible approach to enrichment programme activities. The school environment is attractive, and feels secure. We felt there was a good atmosphere amongst and between staff and pupils when we visited. It was reassuring that many of the governors and staff are Christians but also that the School seemed inclusive and welcoming. When our son recently had to have surgery and a protracted recovery, the School went out of its way to support us practically, and pastorally as a family."

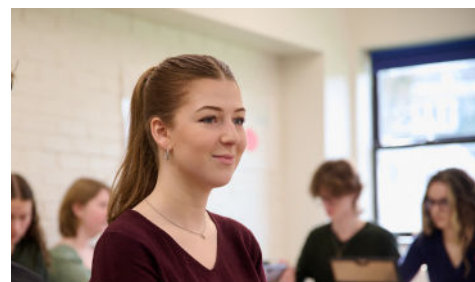
[Rev Wynford-Harris \(Parent of Luke, Year 10\)](#)

"I would highly recommend Luckley as a parent of two children at the School. The dedicated staff work hard to achieve the perfect balance of encouragement, fun, creativity, and high academic and discipline standards. The atmosphere always feels positive and happy, staff are approachable and supportive, pupils have freedom to explore new avenues and excel maybe where they least expected.

One very important point to consider for any child (and we took this seriously) is the food, which is excellent and highly rated by any student or staff member you ask.

Luckley, in every aspect, is a great all-round place for your child to learn, make friends, try new skills and perform to their best ability during their school life."

[Mrs Foster \(Parent of Katie, Head Student 2022/23 and Emily, Deputy Head Student 2023-24\)](#)



This July marked the end of our incredible journey with Luckley. After 11 years with three daughters attending the school, we couldn't have wished for a better experience. The teaching staff consistently went above and beyond, providing not only an exceptional academic education but also fostering a school ethos that has helped our girls become happy, kind, and well-rounded individuals. We have some very fond memories of Luckley House School to cherish.

[Mrs Pritchard \(Parent of Imogen, Head Student 2017/18, Georgiana House Captain 2019/2020 and Octavia, Deputy Head Student 2023/24\)](#)

What Luckley Pupils Say

Having joined Luckley in Year 12 for Sixth Form, I didn't expect to settle into a new environment so quickly. My Luckley experience has left me with countless memories and has enabled me to take the ambitious steps that I'd aimed towards. The close-knit environment allowed me to succeed in my A Levels (A*AA), benefitting from exceptional teaching and support has prepared me for my degree apprenticeship through Exeter University with JP Morgan. I can also say I've made some of my closest friends during my time at Luckley, and this is thanks to the family like nature of the school. Whether you have a passion for music, art, drama, sport, or academia, I can assure you that Luckley is a truly unique school. After all, education isn't just down to academics, and I think there is a greater impact to be felt and remembered from an education that culminates excellent teaching alongside extensive extracurricular activities. [Kam \(Head Student 2022/23\)](#)



"Having spent the last five years at Luckley House it's fair to say I enjoyed every single second. Not only did the school provide me with all the academic help I needed, but it also built me up to be a confident and well-rounded individual due to all the great opportunities offered throughout all year groups of the school. I found that all members of staff really wanted the best for us all, pushing us further when necessary but also making sure no one is ever falling behind and supporting when needed. Sport was a big part of my time at Luckley and it was always so much fun. Weekly sports fixtures and 'The Athlete Development Programme' allowed me to grow and develop as a sportswoman as well as complete two half marathons in Sixth Form. Personally, I loved the smaller environment of Luckley, especially in the Sixth Form. It allowed me to always be fully understood and listened to by my teachers, gain life long friendships and, most importantly, it allowed me to stay on track during exam periods, with help on hand at any time. I believe Luckley really strives to know and understand each and every child and I've definitely been grateful for that when applying to universities and thinking about what my future can look like, with the help of others." [Sophie \(Head Student 2023/24\)](#)

Sophie leaves us to read Physiotherapy at the University of Southampton

"There's no doubt in my mind that Luckley helped me to achieve the maximum I was capable of, both in my core studies and extracurricular activities. However this claim can be asserted by almost any pupil from any school. Where Luckley stands alone, I feel, is the atmosphere and the community in which everyone supports and boosts each other's potential. There is an unspoken understanding at Luckley that every person is given every opportunity to excel at any activity they wish, whether it be their speciality or something they've never done before. In my case, I came into Year 7 with strong musical knowledge. Seven years later I have achieved a Grade 9 GCSE in Drama, played the lead role in the show 'Black Comedy' and acquired a good knowledge of a theatre's light and sound system. Rather than confine me to where I had existing skills, Luckley allowed me to choose my own path and support me wherever I chose to explore. And the options are endless. From choirs to rock bands, football to athletics, cooking, design and theatre.

Due to its size the School has the luxury of supporting each pupil as an individual, with staff that know all of the pupils' interests, strengths and weaknesses. They are able to offer help on a one-on-one basis when necessary and they do this because they genuinely care. It's that unique communal atmosphere that truly makes Luckley the way it is today." [Michael \(Deputy Head Student 2021/22\)](#)

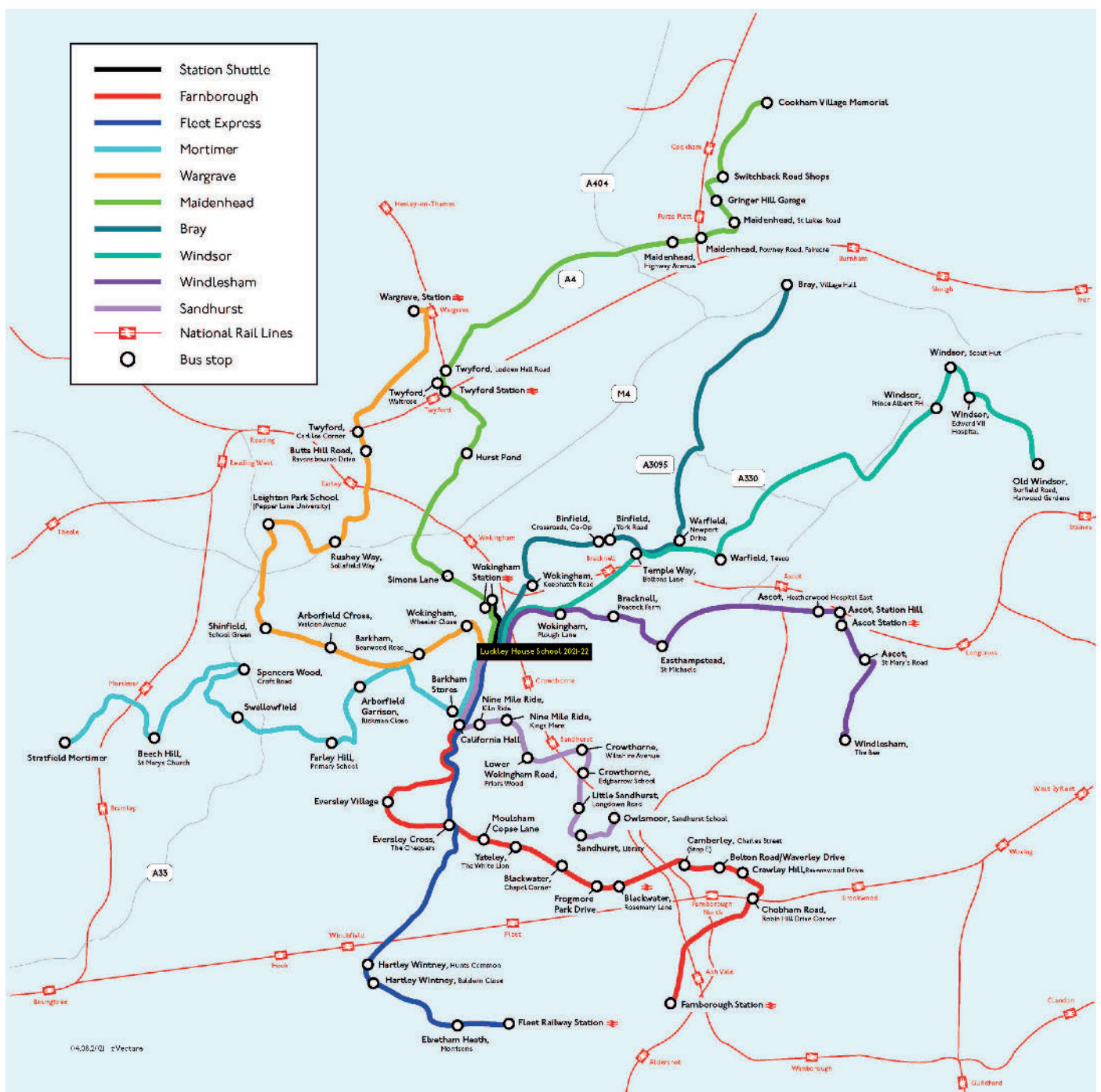


School Transport

We have partnered with Vectare, a specialist school transport management company, to provide a dedicated booking website for school transport. This offers a host of other benefits, including tracking the school bus and receiving email notifications when your child has boarded the service.

The school transport service represents an enjoyable, economical and environmentally friendly way to travel to and from school. A double service operates in the evening, at both 16:10 and *17:40 to provide the option for students to enjoy our wide range of after school activities. *Please note that there is no late bus on Fridays.

Costs are available on the Vectare website. The charge is determined each term and payable in advance. One term's notice is required before cancellation of this service.



<https://luckleyhouseschool.vectare.co.uk/>

“I BELIEVE I CAN BECOME A
PROFESSIONAL CRICKETER”

ISLA



How to find us

By Road

From the M4

- Exit Junction 10
- Take A329M to Wokingham
- Exit A329 to Wokingham Town Centre
- Through town centre, take A321 signposted Camberley and Sandhurst
- Pass under bridge, straight over the roundabout with Tesco on your left, pass under second bridge
- Second turning on the left is Luckley Road
- School entrance is 100 metres on the right

From the M3

- Exit Junction 4
- Follow A321 northward for Sandhurst and Wokingham
- Inside town boundary, at Ford Garage, bear right at roundabout
- Turn right into Luckley Road
- School entrance 100 metres on the right

By Rail

- London Waterloo to Wokingham direct
- London Gatwick direct
- London Paddington to Reading InterCity, change at Reading for frequent rail service to Wokingham
- Taxis are readily available at Wokingham Station

By Plane

- The School is a 45 minute drive from Heathrow Airport
- The School is a 60 minute drive from Gatwick Airport

Luckley House School, Luckley Road, Wokingham, Berkshire, RG40 3EU



“I BELIEVE I WILL BECOME
THE CEO OF MY OWN
COMPANY”

HADRIEL





Luckley House School
Luckley Road, Wokingham,
RG40 3EU

T: 0118 978 4175

luckleyhouseschool.org

